



2015版



---

地址：中国·浙江·诸暨市浣东街道暨东路541号  
ADD: NO.541 Jidong Road, Zhuji City, Zhejiang Province, China  
电话：0086-575-87277368 87277696 87277369  
传真：0086-575-87355569 QQ: 80881556  
HTTP://www.lejiacn.com zjleja.en.alibaba.com  
Email: lejia@lejiacn.com chinalejia@hotmail.com  
Mobile.: +86-13706857035 (Viber & Whatsapp ID)

---

乐迎天下客 佳绣人间锦  
EMBROIDER YOUR COLORFUL DREAMS WITH LEJIA

浙江乐佳机电有限公司  
ZHEJIANG LEJIA ELECTRICAL MACHINERY CO., LTD.

# 目录

## Contents

**A**-02/03  
公司简介  
Company Profile

**B**-04/07  
厂区环境  
Factory Environment

**C**-08/09  
企业荣誉  
Enterprise Honors

**D**-10/11  
内部管理  
Internal Management

**E**-12/13  
企业文化  
Enterprise Culture

**F**-14/15  
科技创新  
Technological Innovation

**G**-16/17  
质量管理  
Quality Management

**H**-18/19  
生产装配  
Production Assembly

**I**-20/21  
机架生产  
Machine Body Making

**J**-22/45  
产品展示  
Products Show

**K**-46/49  
合作交流  
Cooperation

## Company Profile 公司简介



浙江乐佳机电有限公司成立于2002年2月，国家火炬计划重点高新技术企业，浙江省高新技术企业，诸暨市工业规模企业，是集设计研发、零配件生产、机架制作、整机装配于一体的电脑绣花机专业生产厂家，是国内电脑绣花机行业骨干龙头企业之一，公司产品为浙江省名牌产品，浙江省出口名牌产品，乐佳商标为浙江省著名商标。

公司坚持“以质量求生存，以创新求发展”的核心理念，拥有先进的机械加工设备、精密的检测装置和完善的生产管理制度，已通过ISO9001质量体系、ISO14001环境管理体系和CE认证，实现从机架制作到整机装配的一条龙生产，已形成年产中高档电脑绣花机5000台的生产能力。公司十分注重自主创新，自行设计、研发、生产各种系列平绣（高速）、双侧绣、金片绣、毛巾链式绣、缠绕盘带绣、簇纹绣、多合一特种绣等各档绣花机，拥有50多项专利，并有22多只产品通过了省级新产品鉴定；3只产品被评为省级高新技术产品，2个研发项目列为国家火炬计划项目，1个产品列为国家重点新产品，并多次获得浙江省科技进步奖、绍兴科技进步等奖各种奖项。

公司以精密的零件、精湛的技术、先进的设备为基础，高素质的人才为依托，诚信的经营、完美的服务为保障，产品以其独特的设计、可靠的性能、和优质的服务赢得了市场的认同，已成为广大用户的首选品牌之一。通过全体乐佳人的共同努力，乐佳绣机的销售网络已遍布浙江、广东、山东、江苏等全国二十多个省市，并出口远销印度、巴基斯坦、巴西、土耳其、埃及、孟加拉、摩洛哥、阿联酋、台湾、越南、缅甸、阿尔及利亚等三十多个国家和地区。

乐迎天下客，佳绣人间铺。公司始终秉持“以人为本，诚信经营；以质取胜，创新发展；用心服务，客户共赢”的经营理念，热忱欢迎国内外新老客户前来公司指导洽谈业务，公司愿以一流的品质、满意的服务、最优的价格，与你携手共进，共同组织一个精彩的世界！

Founded in 2002 and located in Zhuji Huangdong Industrial Zone, Zhejiang Province, China, Zhejiang Lejia Electrical Machinery Co., Ltd is a Key High-tech Enterprise of National Torch Plan, Zhejiang High-tech Enterprise and Zhuji Industrial Scale Enterprise. It's a professional embroidery machine manufacturer integrated with R&D, spare parts producing, machine body producing, embroidery machine assembling. It's one of the leading enterprises in embroidery machine industry in China. It covers more than 50,000 square meters, and has more than 200 employees, including 20 senior engineers. It's awarded with the honor of NAME BRAND OF ZHEJIANG PROVINCE, ZHEJIANG TOP EXPORT BRAND and its logo is also rated with ZHEJIANG PROVINCIAL FAMOUS TRADEMARK.

Lejia Company insists its managing principle that Surviving based on quality; Improving based on innovation; it possesses advanced processing machinery, precise testing device and perfect production management. Lejia company has been approved by ISO9001 Quality system, ISO14001 Environmental Management System and CE certificate. Now it offers from machine body producing to whole machine assembling, with annual production ability of more than 5,000 sets middle and high grade computerized embroidery machines. Learning from others about the excellent manufacturing technique both at home and abroad, Lejia Company keeps its own way of innovation on the basis of absorbing and improving that strength. Lejia Company has individually designed, developed and manufactured series of embroidery machines of flat (high speed), double sides, sequins, chenille & chain stitch, taping & cording, tuft and mixed functions etc. Now it has more than fifty independent intellectual property rights of patents, and twenty two models have been approved by Provincial New Products Evaluation, two models have been identified with Provincial High-tech products, two R & D projects have been listed in National Torch Plan Program, one model is awarded with National Key Products and Lejia's embroidery machines are also awarded with Progress in Science and Technology in Shaoxing and Zhejiang etc.

Lejia Company actively explores the market both at home and abroad and gets the appreciation of those markets. on the basis of delicate spare parts, excellent techniques, advanced equipment, well-educated employees, honest management and perfect after-sales services. Lejia embroidery machines are now one of the preferred brands for most of the users. With joint efforts of all Lejia people, Lejia brand embroidery machine sales nets cover around domestic markets, and is also popular in India, Pakistan, Bangladesh, Brazil, Egypt, Turkey, Morocco, Dubai, Vietnam, Myanmar and Algeria with its unique designing, reliable performance and good sales services. It is coming into a stable developing road, and becoming a pillar of national computerized embroidery machine industry.

Warmly welcome all friends around the world, LEJIA machines help you excellently embroidering your colorful dreams! With The Best Quality, The Best Service and Reasonable Prices. Lejia company wishes to walk ahead together with you to a bright future!



## 企业精神 ENTERPRISE SPIRIT

拼搏、超越、创新、发展  
Struggling, Surpassing, Innovation, Development

## 企业目标 ENTERPRISE GOAL

树立一流企业形象，打造行业知名品牌，实现企业持续发展  
Form best enterprise image, Build well-known brand, and Realize enterprise sustainable development

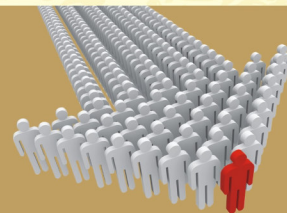
## 经营理念 BUSINESS PRINCIPLE

以人为本，诚信经营；以质取胜，创新发展；用心服务，客户共赢  
People oriented, Honest business; Quality ensured, Innovative Development; Attentive service, Mutual benefits





Modern  
Workshop  
现代化厂房



生产工序 完美组合  
Production process, Perfect combination

公司现代化厂区拥有6万余平方米的标准厂房，从机架制作、机架加工、油漆、生产总装到零件制作和组装的各生产过程都配有独立、整洁、宽敞的车间厂房，引进最为先进的生产加工设备，组成了多条最佳整合的生产工艺流程线。同时，公司实施ISO9001的管理模式，提升了内部管理水平，充分调动了员工的积极性和创造力，杜绝了生产中的浪费现象，大大提高了生产效率，保证了产品质量的稳定性，为公司赢得市场提供了生产与品质保障。

Lejia modern workshop covers more than 50 thousand square meters. Each department, from machine body making, machine body processing, painting, assembling to spare parts making, has its own separate, tidy and spacious workshop. The world's most advanced manufacturing equipment was introduced, and it makes the excellent assembling line for production. Meanwhile the ISO9001 management system was put into use, which promoted the enterprise management, raised the employees' working enthusiasm and innovation, avoided the waste during production, improved the efficiency, ensured the stable quality, and it offers the guarantee both for productivity and quality to win the market.

我们一直坚持

We've been insisting

以质量求生存，以创新求发展

To survive based on quality and develop based on innovation;

以诚信树品牌，以服务拓市场

To build the brand based on good faith and expand market based on sincere service;

短短十年间

Over the past decade,

乐佳人秉持“执着、敬业、精细、专业”的原则

With the principle of "Being persistent, dedicated, meticulous and professional"

艰苦奋斗，团结协作

Lejia people worked hard together as a team,

用智慧与汗水铸就了今天的辉煌

and made today's glorious Lejia with wisdom and sweat!

## 企业荣誉

### ENTERPRISE HONORS

- 国家重点高新技术企业  
NATIONAL KEY HIGH-TECH ENTERPRISE
- 国家火炬计划项目  
NATIONAL TORCH PLAN PROGRAM
- 国家重点新产品  
NATIONAL KEY NEW PRODUCT
- 浙江省高新技术企业  
HIGH AND NEW TECHNOLOGY ENTERPRISE OF ZHEJIANG PROVINCE
- 浙江省高新技术研发中心  
ZHEJIANG HIGH-TECH RESEARCH AND DEVELOPMENT CENTER
- 浙江省名牌产品  
NAME BRAND OF ZHEJIANG PROVINCE
- 浙江省出口名牌产品  
ZHEJIANG TOP EXPORT BRAND
- 浙江省著名商标  
ZHEJIANG PROVINCIAL FAMOUS TRADEMARK
- 浙江省科学技术进步奖  
SCIENCE AND TECHNOLOGY PROGRESS PRIZE OF ZHEJIANG PROVINCE
- 浙江省工商企业信用AA级重合同守信用单位  
CREDIT A LEVEL ENTERPRISE OF INDUSTRY AND COMMERCE IN ZHEJIANG PROVINCE
- 中国人民银行信用等级AAA级  
CREDIT AAA LEVEL ENTERPRISE BY PEOPLE'S BANK IN CHINA
- 绍兴市“诚信企业”  
CREDIBLE ENTERPRISE IN SHAOXING
- 诸暨市工业规模企业  
ZHUJI INDUSTRIAL SCALE ENTERPRISE
- 诸暨市诚信民营企业  
CREDIBLE PRIVATE-OWNED ENTERPRISE IN ZHUJI



## Enterprise Honors 企业荣誉

# 诚信铸就品牌 Honesty creates brand



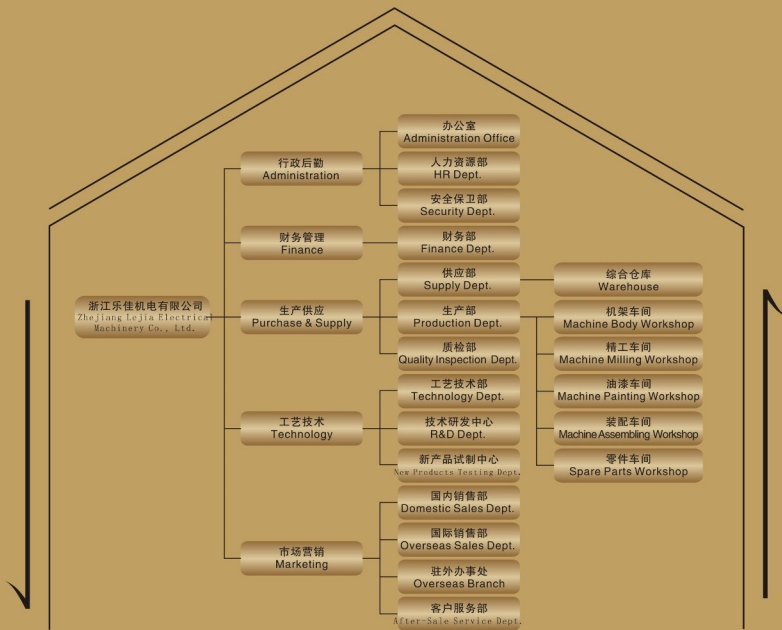
先后被评为国家重点高新技术企业，浙江省高新技术企业，通过ISO9002质量体系认证，ISO14001环境管理体系和欧盟CE认证，自营进出口权，荣获浙江省科技进步奖、浙江省名牌产品、浙江省出口名牌产品、浙江省著名商标等荣誉，是专业的电脑绣花机骨干生产企业。

As a professional leading manufacturer for computerized embroidery machines, Lejia now enjoys fames such as National key high-tech enterprise, Zhejiang Provincial high and new tech enterprise, and it has been approved by ISO9001 Quality system, ISO14001 Environmental Management System and has also been authorized with CE certificate, Importing and exporting License. And it's awarded with Progress in Zhejiang Province, Name Brand of Zhejiang Province, Zhejiang Top Export Brand and Zhejiang Provincial Famous Trademark etc.



# 组织结构

Organization Structure



## Internal Management

### 内部管理



## 细化制度，筹划发展

### Refined system and Planned development

“内部管理制度化，质量控制标准化”是公司全面加强企业管理、提升企业综合竞争力的指导方针。公司严格按照ISO9001:2000国际质量管理体系的标准建立了一套完善的管理制度和标准，涵盖生产工艺、质量控制、市场营销、财务管理、人力资源各个方面，确保生产经营的每一个环节都能得到有效的控制，为实现企业的可持续发展奠定了基础。

Systematical inner management and standardized quality control will be the guidelines for enterprise to fully strengthen the management and raise the comprehensive competitiveness. On the basis of ISO9001:2000 International Quality Management Standard, a comprehensive management system and management standard has been put into use which covering all aspects such as production, quality control, marketing, finance management and human resource, etc, to ensure the control of each process during production and lay the foundation for enterprise sustainable development.



## 浙江乐佳机电有限公司2013年度职工大会





## Enterprise Culture 企业文化

企业文化彰显企业个性，培育优秀企业文化是确立员工核心价值观和提升企业核心竞争力的基础。乐佳人正是在以“责任、卓越”为核心内涵的企业文化的熏陶中，坚守“协力互助 至诚团结 爱岗敬业 企兴我荣”的员工信条，以“正身之德”而“厚民之生”，做一名兼济天下、善尽责任、不断超越的优秀员工。

Enterprise characteristic is reflected from its culture. Cultivating good enterprise culture is the foundation to form the core value for its employees and raise enterprise core competitiveness. Immersed in the culture of "responsibility and excellence" with the belief of "being mutual assistance, honest, united, and combined with enterprise both physically and mentally", Lejia people are aiming to be more responsible and progressive.





## 通过省级新产品鉴定一览表 Approved Provincial New Products List

序号No.	成果登记日期 Date	登记号 Registration NO.	产品名称 Products Name	荣获的其他荣誉 Honor
1	2009.1.31	086006174	多功能激光刺绣机 Multi-Functional Laser Embroidery machine	国家重点新产品 National Key New Product 浙江省高新技术产品 High and New Technology Product of Zhejiang Province 绍兴市科技进步三等奖 Science and Technology Progress Prize of Zhejiang Province 诸暨市科技进步二等奖 Zhuji Science Progress Prize
2	2009.1.31	086006175	新型簇绒绣花机 New Model Tuft Embroidery Machine	浙江省高新技术产品 High and New Technology Product of Zhejiang Province 国家火炬计划项目 National Torch Plan Program
3	2009.1.31	086006181	叠片绣、毛巾绣混合机 Twin Sequin and Chenille Mixed Embroidery Machine	浙江省高新技术产品 High and New Technology Product of Zhejiang Province
4	2010.2.13	09006265	金片热定型多功能绣花机 Sequin Ironing Type Multi-functional Embroidery Machine	
5	2010.2.13	09006264	高效叠带混绣绣花机 High Efficiency Taping Mixed Embroidery Machine	
6	2010.2.28	09006426	多头叠片宽幅绣花机 Multi-heads Twin Sequin Widened Embroidery Machine	
7	2010.2.28	09006266	新型四合一高效混绣绣花机 New Model 4 in 1 Mixed Embroidery Machine	
8	2010.2.28	09006425	直线式双机头自动袜子罐头机 Linear Double Heads Auto Sock Toe Linking Machine	
9	2011.3.22	11006093	叠片和毛巾、组合缝绣和叠带式多功能绣花机 Twin Sequin, Chenille, and Taping/Cooling Mixed Embroidery Machine	
10	2011.3.22	11006095	直线式双缝合电脑袜子罐头机 Linear Double Heads Auto Sock Toe Linking Machine	浙江省科技进步三等奖 Science and Technology Progress Prize of Zhejiang Province

## 专利汇总表 Patents List

序号No.	专利名称 Patents Name	授权号 Authorized No.	授权日期 Date	序号No.	专利名称 Patents Name	授权号 Authorized No.	授权日期 Date
1	一种高精度绣花机布类调节机构 A Kind of High Precision Adjustment set for clips on Embroidery Machine	201420256 0926.1	2014.09.26	15	珠管零件刺绣机 Beads Embroidery Machine	2012 2 0120278.X	2012.03.20
2	一种绣花机用绣框调节机构 A Kind of Adjustment structure for Pantagraph on Embroidery Machine	201420256 0739.3	2014.09.26	16	简易叠带金片刺绣机 Easy Taping and Sequin Embroidery Machine	2012 2 0120268.5	2012.03.20
3	一种绣花机夹布机构 A Kind of Fabric Clip for Embroidery Machine	201420256 0797.6	2014.09.26	17	新型叠带褶皱刺绣机 New Type Taping Embroidery Machine with Folding Function	2012 2 0120186.0	2012.03.20
4	一种绣花机上结构改进的铺料架 A Kind of Improved Fabric Spreading Shelf for Embroidery Machine	201420256 0765.6	2014.09.26	18	中置式传动多头刺绣机 Multi Heads Embroidery Machine with Motor in Middle Position	2012 2 0120211.5	2012.03.20
5	一种绣花机高度可调的减震脚垫 A Kind of height-adjustable Anti Vibration Pad for Embroidery Machine	201420256 0822.0	2014.09.26	19	一种剪刀 A Kind of Trimming Knife	2012 2 0117826.2	2012.03.20
6	一种绣花机的减震支撑座 A Kind of Anti Vibration Pad for Embroidery Machine	201420256 0824.X	2014.09.26	20	双轴传动多头刺绣机 Multi Heads Embroidery Machine with Double Shafts	2012 2 0120246.9	2012.03.20
7	一种导向滚子座 A Kind of Guide Roller Base	201112011 4981.4	2011.04.13	21	一种绣花机头辅助压脚提升块 A Kind of Presser Foot Lifting Device in Head on Embroidery Machine	2011 2 0114964.0	2011.04.13
8	一种新型绣花机用桌板 A Kind of Tabletop for Embroidery Machine	201420256 0897.0	2014.09.26	22	一种弓杆销 A kind of Bow Pin	2011 2 0114975.9	2011.04.13
9	一种针杆锁紧圈 A Kind of Tightening Ring for Needle bar	201120111 4928.4	2014.09.26	23	一种针杆锁紧套 A Kind of Needle Bar Tightening Sleeve	2011 2 0114929.9	2011.04.13
10	一种气动式绣花机用绣框调节机构 A Kind of Adjustment Structure by Gas for Pantagraph on Embroidery Machine	201420256 0900.7	2014.09.26	24	一种下针杆套 A Kind of Needle Bar Sleeve	2011 2 0114974.4	2011.04.13
11	一种剪线电机齿轮 A Kind of Trimming Motor Gear	2012 2 0117829.6	2012.03.20	25	一种用于缝框驱动装置的移位齿轮 A Kind of Shifting Gear of Frame Driver System	2011 2 0114930.1	2011.04.13
12	一种叠片和毛巾组合缝绣刺绣机 A Kind of Taping Embroidery Machine with overlapped Sequin and Chenille	2012 2 0120214.9	2012.03.20	26	一种伞齿轮安装座 A kind of Bevel Gear Base	2011 2 0114983.3	2011.04.13
13	多头叠片宽幅绣花机 Multi Heads Embroidery Machine with Overlapped Sequin and Big Working Size	2012 2 0120233.1	2012.03.20	27	一种针杆叉 A Kind of Needle bar Fork	2011 2 0114962.1	2011.04.13
14	新型叠带全伺服驱动刺绣机 New Type Taping Embroidery Machine with All Servo Motors	2012 2 0120160.6	2012.03.20	28	一种绣花机头辅助压脚夹轴装置 A Kind of Clamp Shaft of Presser Foot in Heads on Embroidery Machine	2011 2 0114973.3	2011.04.13



Technological Innovation 科技创新  
科技为先导，创新求发展  
Technology as precursor, Develop based on innovation

自主科技创新，是实现企业可持续发展的核心要素。乐佳正是以“科技为先导、创新求发展”为理念，集公司全体员工之智慧，借公司技术人员之巧手，齐聚合力，自主创新，研发了多款市场需求的新产品，获得了多项国家、省、市科技成果的奖励，为企业的可持续发展注入了新动力。

Independent technological innovation is the main element to realize sustainable development. Under the principle of "Technology as precursor, develop based on innovation", integrating all employees' wisdom and technology, Lejia developed lots of popular new products which won many national, provincial and municipal rewards for technology progress. And this offers new power for enterprise sustainable development.





## Quality Management 质量管理

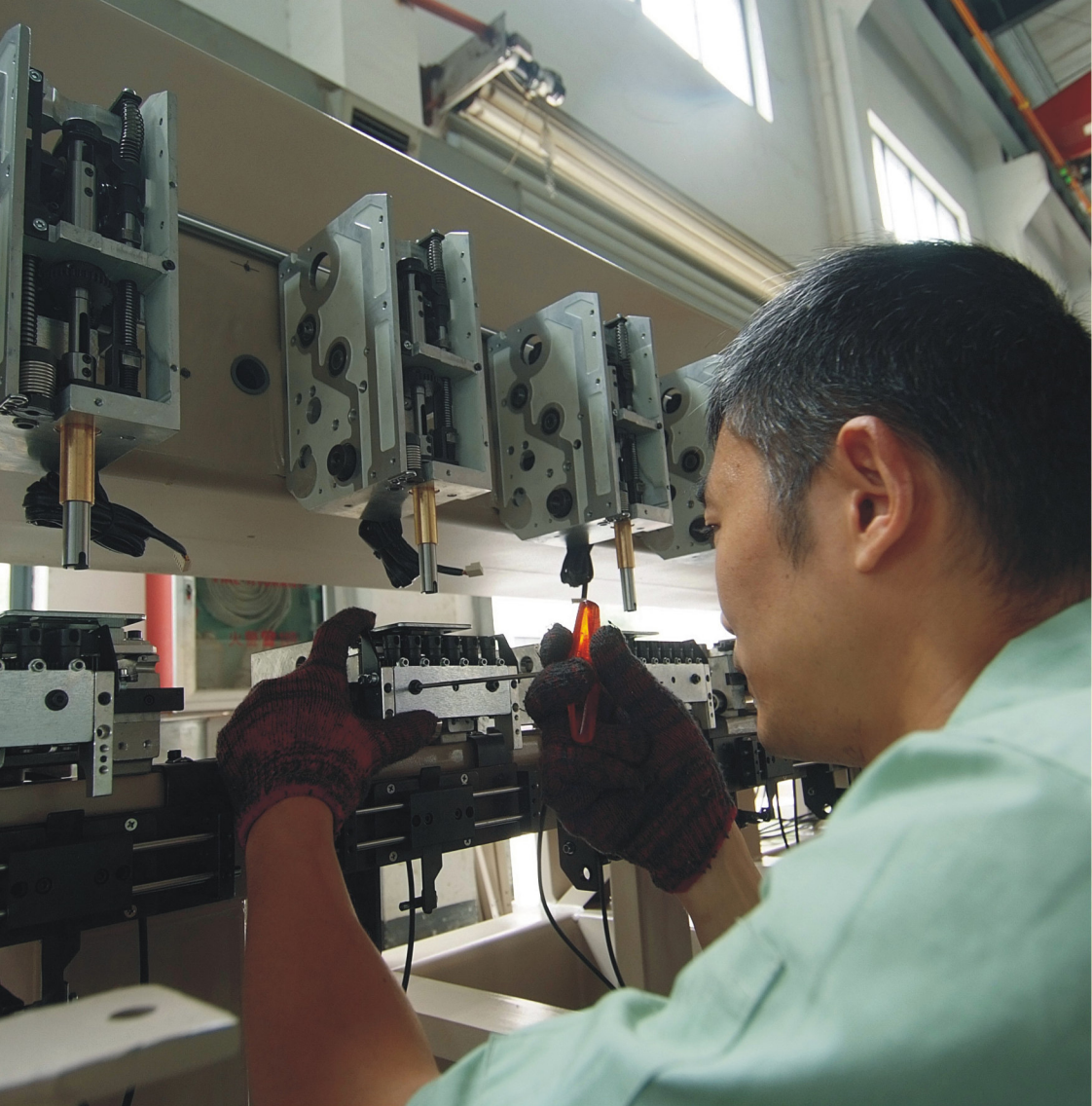
乐佳品质，精益求精  
Lejia Quality keeps improving

品质，源于精益求精的不懈追求；乐佳品质，源于用心、细心、精心的每一步……  
生产过程中严把每一道工艺流程，严控每一个质量指标，精心加工、精确装配、严格检测，  
致力于为您提供更为优质耐用的绣花机。

Excellent quality comes from incessant improvement, Lejia quality roots in the circumspection of every step.

With strict control of each individual production process, quality standard, precise assembling and rigorous detection, Lejia offers you more reliable and durable embroidery machines.





## Production Assembly 生产装配

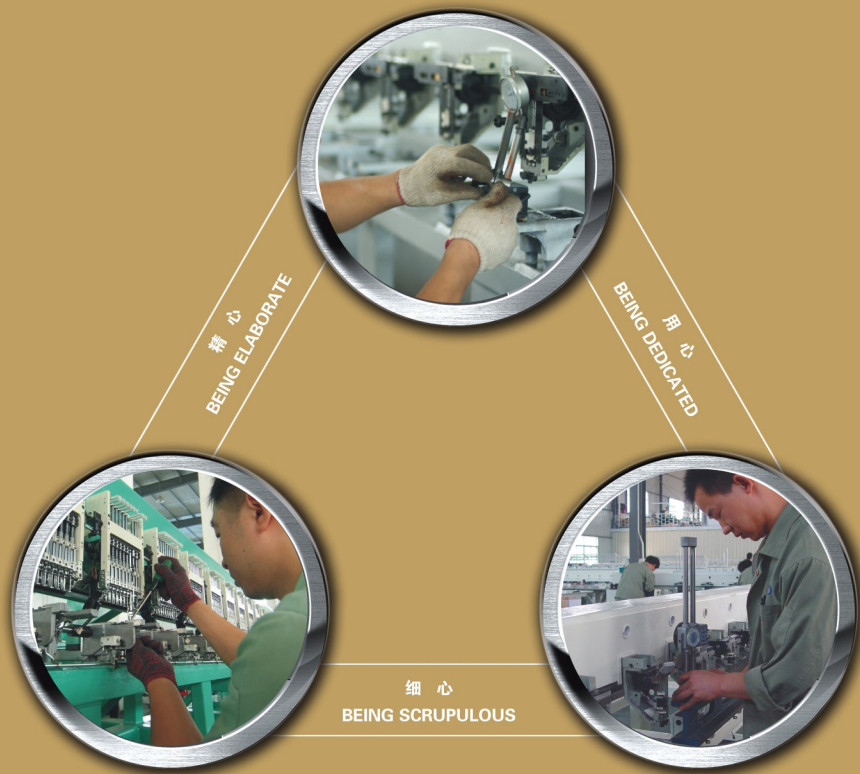


### 精心用心，追求卓越 More Attentive, More Excellent

生产装配的每一道工序、每一个环节、每一个零件、每一颗螺丝，我们都是用心去做、精心装配，不断地去改善提高，不断地追求外表与内在品质的完美统一，使我们的机器性能有了更加卓越的表现。

We put all our heart into each production process, each spare part and even each screw in order to make our machines perfect and integrity in both appearance and performance.





## Machine Body Making 机架生产

自主设计，持续改进  
Improving based on Lejia own design

机架是电脑绣花机的主干身躯，乐佳实现了从设计选型、选料定材、卸料焊接、喷砂除锈、铁削加工及机架打孔等整个机架制作的流水线生产，在同行业中居领先地位，从源头保障了绣花机的整机品质，这是乐佳的传统工艺优势和整机品质优势。

Machine body is the main structure of embroidery machine. Lejia has made the perfect production flow line for complete machine body making from designing, material choosing, soldering, sand blasting, milling processing and machine body punching, etc.. This is the leading technology in embroidery machine industry and it guarantees the machine quality from very beginning, which is also the point of Lejia's core competitiveness exists as a top manufacturer of embroidery machines.



# Products Show

## 产品展示 →

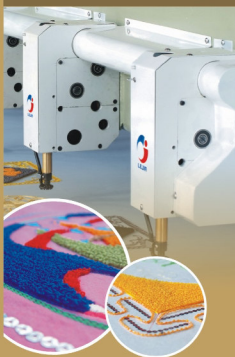
平绣(高速)系列  
FLAT(HIGH SPEED) SERIES



金片(珠管)绣系列  
SEQUINS(BEADS) SERIES



毛巾绣系列  
CHENILLE & CHAIN STITCH SERIES



缠绕(混合绣)系列  
COILING(TAPING) SERIES



烫钻混合绣系列  
RHINESTONE HOT FIXED  
(MIXED)SERIES



多合一混合绣系列  
MULTI-FUNCTION MIXED SERIES



帽绣/成衣绣系列  
CAP-T-SHIRT/TUBULAR SERIES



全自动多头缝纫(模板)机系列  
MULTI-HEAD AUTOMATIC SEWING  
MACHINE SERIES





乐迎天下客 佳绣人间锦  
EMBROIDER YOUR COLORFUL DREAMS WITH LEJIA



## 平绣系列

### LJ-Flat Series

LJ平绣系列是自行设计生产的最经济型绣花机，广泛应用于服装面料、窗帘、窗纱、花边、装饰品、工艺美术品等领域。

LJ flat series of embroidery machine is designed and manufactured independently by Lejia compnay and it's been widely used for the embroidery of garments fabrics, curtains, window gauzes, laces, ornaments and crafts, etc.

- 可根据用户要求设计生产3-15针，1-130头，Y450-1800各种规格的机型  
Models from 3 to 15 needles, from single head to 130 heads and with Y axis embroidery area from 450mm to 1500mm;
- 可选择配置伺服驱动系统，配合全新控制方法，实现最高转速850转/分，最低转速750转/分，切换针长8.0mm的技术指标，从而实现高效机的功能  
Frame servo motor is available with new control system to realize max speed of 850RPM, min speed of 750RPM and 8.0mm needles changing interval, which ensures high working efficiency.
- 可选择配置Ⅲ型断针，突破传统隔头绣功能，实现分组刺绣、扩大幅面、扩充针杆数的组合绣功能  
Compatible with 3" Generation breakage detection system, which optimizes traditional alternative embroidery and also realizes grouping embroidery and widened embroidery with more needles bars;
- 可采用粗线功能，实现最高900D粗线的绣制。  
Available for use of thick thread with maximum 900D yarn embroidery.
- 可选择扩展金片、筒剪绣线、筒剪毛巾、雕孔绣、珠管绣、散珠绣、热切割、自动换底线等功能。  
It can be equipped with functions of sequin device, cording/taping, easy chenille, boring, beads, thermal cutting and auto bobbin changing etc.



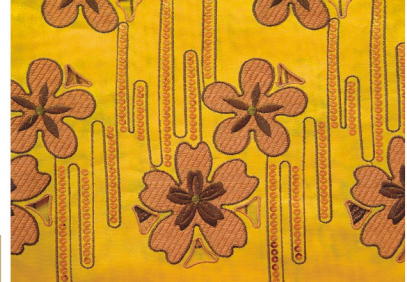


## 高速系列

### LJ-High Speed Series

LJ高速系列是我公司结合先进的控制技术、可靠的机架结构及合理的传动机构而研发生产的一款高转速、低噪音的绣花机，实现最高绣作转速1200转，进一步提高生产效率，并可配置单片/叠片/双单片/双叠片等各种金片、简易绳绣、简易毛巾、散珠绣装置，实现速度与绣品质量的完美结合。

LJ series of high speed embroidery machines are developed with advanced controlling system, reliable machine body and reasonable driving structure with high speed and low noise. It reaches max speed of 1200 RPM and it's compatible with single/double side sequin device, single/double side overlapped sequin device, easy taping device, easy chenille device and beads device that makes the perfect combination with speed and embroidery quality.



## 双侧绣系列

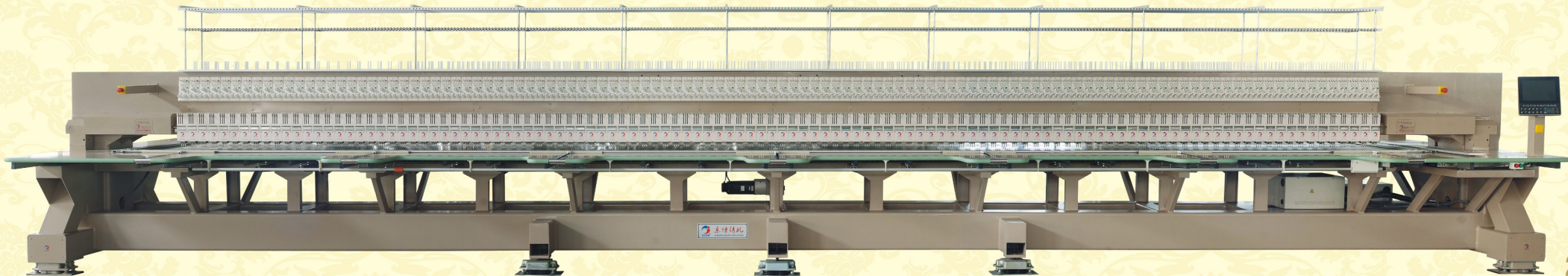
### LJ-Double Side Heads Series

LJ双侧绣系列电脑绣花机是在普通平绣机的功能基础上进行改进，在大梁的另一侧增加一排机头，实现绣花机双侧同时绣作功能，与普通的绣花机相比，实现单机双侧双排机头同时绣作，单台电控控制双倍机头工作，绣花效率翻倍提高，同时可大大降低成本，节省场地，特别适用于花边、服装裁片、服装面料，整幅绣作等领域的应用。

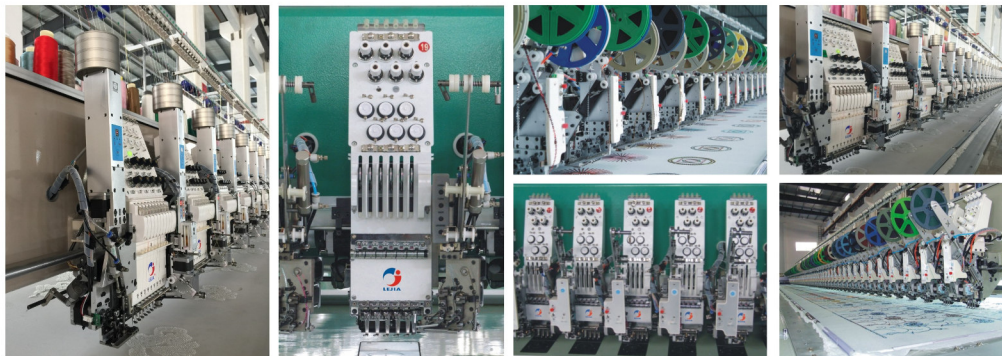
同时与普通平绣一样，可配置单片/叠片/双单片/双叠片等各种金片、雕孔绣、筒易绳绣、筒易毛巾、散珠绣装置，实现绣品的多样化。

LJ double side heads embroidery machines are improved based on normal flat embroidery machine, with extra row of heads at opposite side, to make embroidery simultaneously for two rows of heads. Compared with normal embroidery machine, it only uses one controller to run two rows of embroidery heads, which makes doubled working efficiency with less cost and ground space. It's specially used for lace, pieces of garments, fabric of garments and whole pantograph embroidery.

Same with normal embroidery machine, it can be equipped with functions of single/double side sequin device, single/double side overlapped sequin device, easy taping device, easy chenille device and beads device etc to make various of embroidery designs.





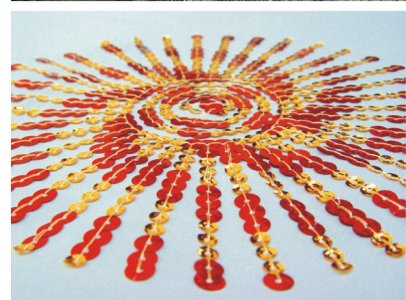


## 金片（珠管）绣系列

### LJ-SEQUINS (BEADS) SERIES

Lj金片（珠管）绣系列电脑绣花机是在普通平绣机的基础上设计增加金片（珠管）绣功能，实现2-16mm的各种规格及圆形、方形、梅花形、凹凸片等各种形状的金片和玻璃散珠的绣作，可选择侧面、正面、侧15°、侧20°等多种安装方式，满足单金、双金、四金以及双色绣、叠片绣、交叉绣等多样化刺绣工艺的需要，使绣品更加绚丽多彩。

Lj-sequins (beads) series of embroidery machine is developed on the basis of flat embroidery machine with additional sequin (beads) devices, which are compatible with different sequin (beads) sizes from 2mm to 16mm and different shapes such as round, rectangular, quincunx and concave-convex, etc. Sequins devices can be installed as side, front, side 15° and side 20°, etc to make different sequins embroidery with single, double or twin sequins. It makes the embroidery more colorful and attractive.





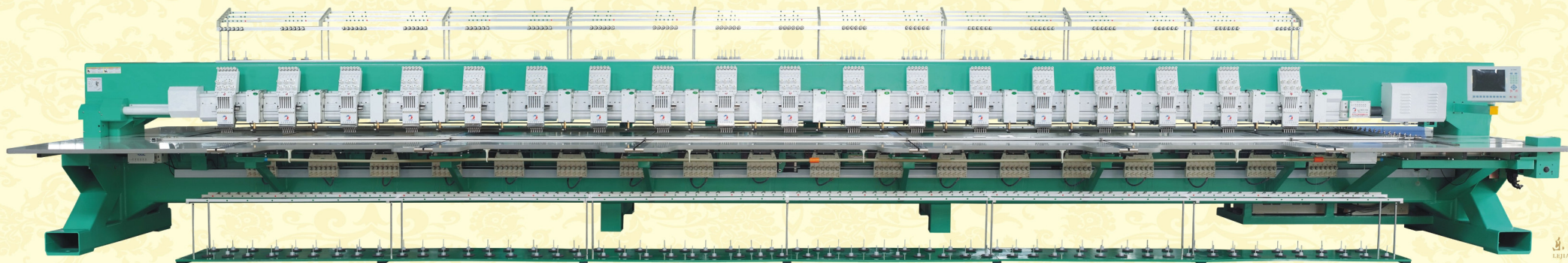
## 毛巾绣系列

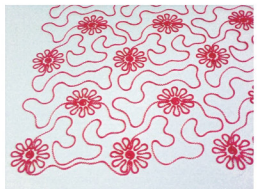
### LJ-Chenille & Chainstitch Series

毛巾/链式绣有着完全不同于锁式机的新型线迹，其绣品立体感强、层次丰富，在儿童服装、家居装饰、女士鞋帽等领域具有广阔的发展前景。

Chenille/Chainstitch embroidery has new type embroidery stitches, which is totally different with lock stitches and has a better sense of three-D appearance. It's going to be widely used in children garments, home decoration, ladies shoes and cap industries.

- 毛巾/链式绣的最高转速1000转/分，头数1-50头  
With max speed of 1000RPM and heads number from 1 to 50.
- 毛巾/链式功能手动/自动切换，实现H轴（环梭）换色（4色/6色/9色）  
Automatically/manually changing with chenille and chain type via H shaft color changing (4/6/9 colors);
- 根据不同的配置，毛巾绣机头可采用42步进电机分头控制（全独立）、上机头采用步进电机独立控制/下机头（D轴）伺服电机集中控制（半独立），上下机头均采用伺服电机集中控制（H/D轴集中）等三种方式，以实现不同混合绣功能装配的需要。  
For different machine configurations, chenille machine heads can be controlled by 42 stepping motor (fully independently), or upper heads controlled by stepping motors independently and D shaft centralized controlled by servo motor, or both upper and lower heads controlled by servo motor (H/D shaft) to meet different requirements of assembling.
- 针高1-10档设定，方便用户根据不同绣花线、面料来调整合适的绣作效果  
Needle-table distance from 1 to 10 levels in order to meet different requirements from customers with various fabrics and embroidery yarns;
- 可结合平绣、金片、筒易缠绕、链式金片绣等多种功能的组合  
It can also combine flat, sequin, simple coiling and chain sequin etc.





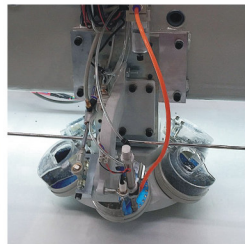
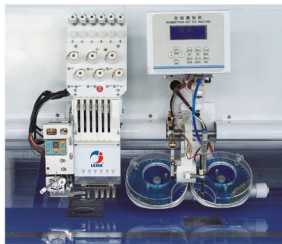
## 缠绕（混合）绣系列

### LJ-Coiling (mixed) Series

LJ缠绕（混合）绣系列具有缠绕、锯齿（Z）绣、羽状绣等多种绣作方式，通过离合气阀，实现单头补绣及隔头绣功能，并可结合平绣、金片绣等其他绣作方式，其绣品形象、美观、层次丰富，被广泛应用于服装、服饰及工艺品等行业。

LJ-coiling (mixed) series of embroidery machine has different ways of work such as coiling, zigzag and frill embroidery. It can make mending embroidery with single head and alternative embroidery by air valve controlling. Combined with flat and sequin embroidery, it's more vivid, beautiful and stereoscopic, and therefore it's been widely used for garments and crafts industries.



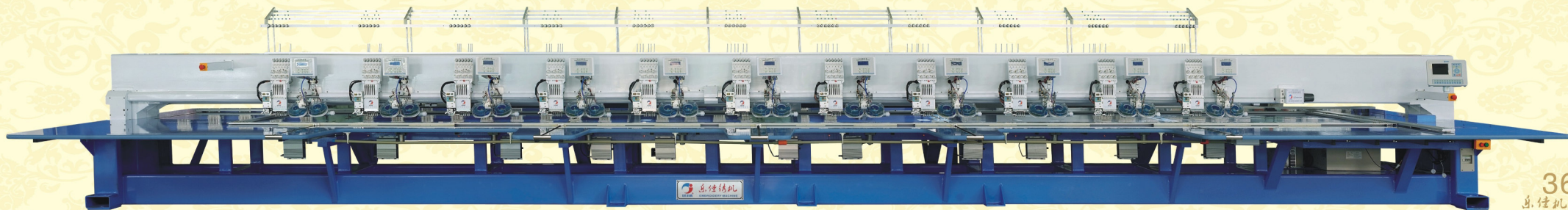
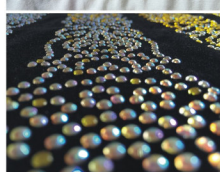


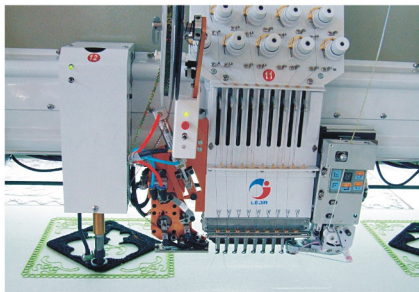
## 烫钻（混合绣）系列

### LJ-Rhinestone hot fixed (mixed) Series

LJ 烫钻（混合绣）系列是将利用转盘、吸嘴自动将钻珠材料通过超声波热溶方式固定于面料的一种加工工艺，可实现SS6-SS30 2mm-6mm类型的钻珠和1-6色的自动转换，达到每分钟200-250颗的速度，与传统的手工烫钻方法相比，具有花样烫钻位置精准，粘着度牢固、速度快等特点；同时与平绣机头相结合，添加金片、绳绣等其他刺绣工艺，实现绚丽多彩的刺绣与烫钻功能的完美结合，主要应用于内衣、童装、T恤、绣花图案、皮革、手袋、发饰、鞋帽及其他饰品。

LJ rhinestone hot fixed (mixed) embroidery machine uses turn plate and nozzles to fix the rhinestones on fabric by ultrasonic hot melt. It automatically changes the rhinestones with size of SS6-SS30 2mm-6mm and colors from 1-6, with maximum speed of 200-250 pieces rhinestones per minute. Compared with way of traditional manual rhinestone hot fixed, it has advantages of excellent precision, better adhesive firmness and higher speed. It can be mixed with flat embroidery heads which equipped with sequin and taping devices, to make gorgeous combination of embroidery and rhinestones. It's mainly used for underwear, children's wear, embroidery designs, leather, hand bags, hair decorations, shoes and caps etc.



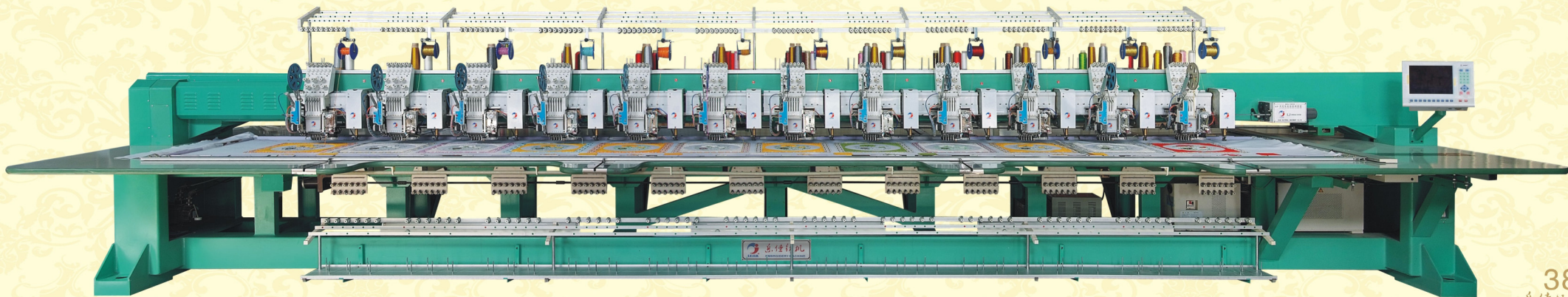


## 多合一混合绣系列

### LJ-Multifunction Mixed Series

LJ多合一混合刺绣电脑绣花机为一款性价比较高的特种刺绣机型，可根据客户需求和绣品的个性化要求，合理有效地将平绣（包括金片、散珠绣、简易绳绣、锁式毛巾、雕孔绣）、毛巾/链式、链式缠绕、烫钻、热切割、激光切割等各种绣作功能的完美组合，实现一台刺绣机上完成多种混合针迹绣品的绣作，创造出高精度、高附加值、丰富多彩的刺绣效果。

LJ series of mixed embroidery machine is a kind of special machine with high ratio of price and performance. It can reasonably and efficiently combine flat(including sequin, beads, easy coiling, lock stitches and boring), chenille/chain stitches, chain coiling, hot fix rhinestone, thermal cutting and laser cut etc as per customers' requirements to realize different mixed embroidery with high precision, highly added value and wonderful visual effects.





乐迎天下客 佳绣人间锦  
EMBROIDER YOUR COLORFUL DREAMS WITH LEJIA

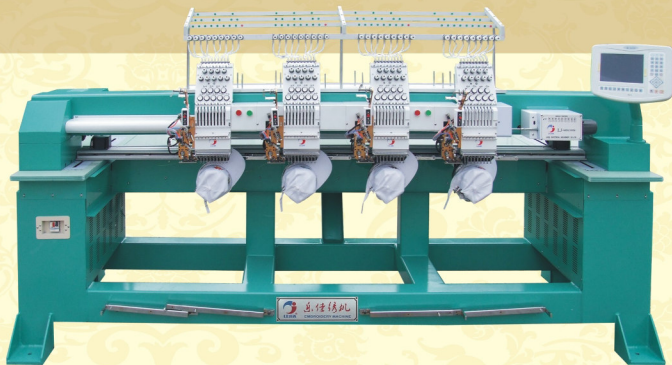
## 帽绣（成衣绣）系列

### LJ-Cap/T-shirt/Tubular Series



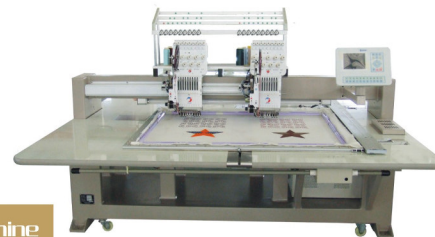
LJ帽绣/成衣绣系列采用悬挂式梭床箱，配套使用帽绣架、成衣绣架、平绣架来实现帽绣、成衣绣、平绣三大功能；适用于帽子、T恤及衣片的刺绣工艺。其中台式单头机结构新颖、精致轻巧，适合试样及小批量生产，可满足各种个性化刺绣的需求。

LJ-Cap/T-shirt/Tubular series of embroidery machine adopts overhanging type hook base, integrated with different kinds of frames for cap, garments and flat embroidery with multifunction for caps, garments and flat embroidery work. It can be used for cap embroidery, T-shirt embroidery and garments cut piece embroidery. Among all models, the single head machine has the advantages of unique machine structure and being light and handy, which suit for sample embroidery and small lot production to meet personalized requirements.



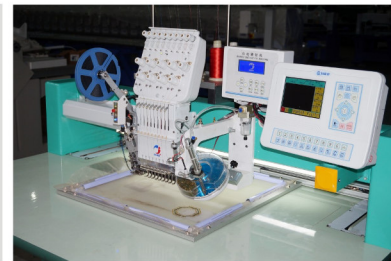
## LJ-单头/双头打样机

### LJ-Single/Double Heads Sampling Embroidery Machine



LJ-单头/双头打样机具有功能齐全、体积小、移动轻巧、成本少的特点，可以随时满足客人各式各样的打样的需求。该机可以做单头/双头平绣机、帽绣机、金片混合绣、缠绕混合绣、简易毛巾混合绣、简易绳绣混合绣以及烫钻混合绣等，以满足不同花型打样的需要，也可应用于小型绣花工厂、家用、门店等。

LJ--Single/Double Heads Sampling Embroidery Machine has features of features of multi functions, small volume, flexible movement and low cost. It can make embroidery samples for customers at any time for all designs. It can be made with single/double heads of flat, sequin, easy cording, easy chenille and rhinestone hit fixed embroidery machines to meet various requirements of embroidery.





## 全自动多头缝纫机（模板机）系列

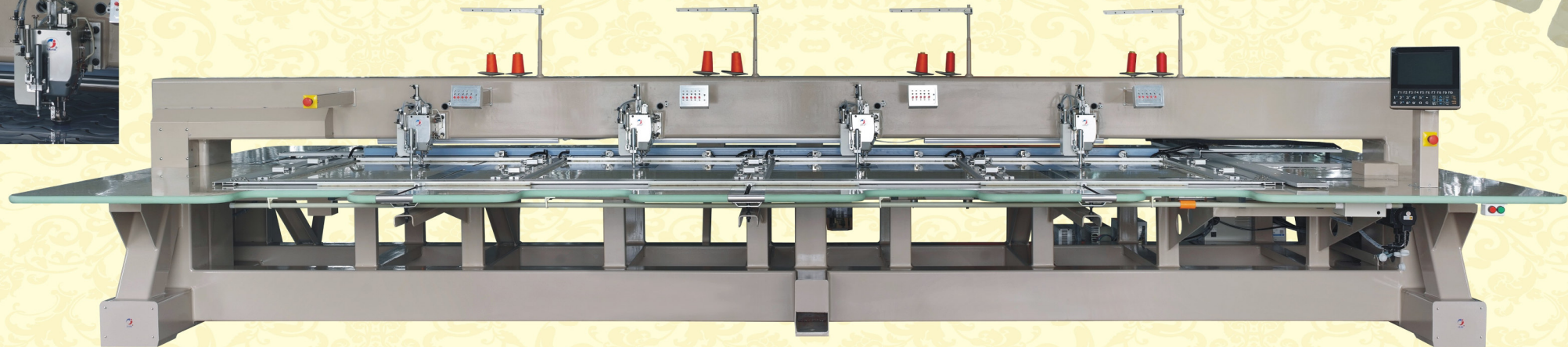
### LJM-Multi-heads Automatic Sewing Machine Series

LJM 全自动多头缝纫机（模板机）系列是我公司根据高速缝纫机、自动模板机的特点，结合电脑绣花的功能研发成功的一款全自动服装模板缝制设备，可自动缝制各种图形线迹的同时实现绣花功能的完美结合，主要应用于服装部件、轻薄羽绒服、棉服、尼绒大衣、风衣外套等各式服装及汽车坐垫、枕芯、枕套、家居沙发、箱包、皮具等领域。

LJM-multi heads automatic sewing machine are developed by combination of embroidery machine, high speed sewing machine and automatic molding machine, and with fully automatic mold sewing facility for garments, it not only has functions of sewing of various designs of stitches but also embroidery. It is mainly used for garments such as pieces of garments, thin down coat, cotton overcoat, woolen overcoat, windbreaker jacket etc, and also for car seat cushion, pillow core, pillow cover, home sofa, suitcase and leather products etc.



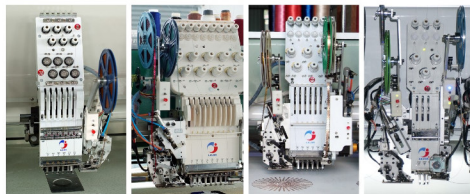
- 机器操作简单易学，只需简单培训即可上岗操作，减少对熟练技术工人依赖。  
Easily to be operated with simple training that doesn't rely too much on skilled operators.
- 实现多头同步自动缝制，配有上下点号笔，为下一道工序做加工前准备，缝制线迹一致性好，使服装缝制工序简单化、标准化、流程化，极大地提高了生产效率，降低次品率。  
Multi heads automatically sew simultaneously with accordant stitches. It has upper and lower marker that prepares for next process. And therefore it simplifies the sewing for garments with Standardization that greatly improves the work efficiency and reduces defective rate.
- 通过模板的应用，轻松实现特殊缝制工艺，如弧缝、双线缝纫以及其他复杂的缝制图形线迹；同时可实现单针平绣的刺绣功能，实现服装模板缝制与刺绣的完美结合。  
With application of mold, it can finish special sewing like curve sewing, double thread sewing and other complicated sewing of stitches. Meanwhile it also works with single needle flat embroidery that makes perfect combination with garments mold sewing and embroidery.
- 采用独特的旋转气缸自动夹紧与松开模板，简单方便，使模板四周压力均匀，保证缝制物料平整及缝制精度。  
By using unique rotating cylinder, it can tight and loosen the mold easily, which offers well-proportioned pressure all around the sewed fabrics and ensures the high precise sewing.
- 采用断线与底线检测功能及模板花样匹配的自动识别功能，使机器更加智能化。  
With application thread breakage detection, UTC, and automatic recognition of mold designs, it is more intelligent.
- 采用先进的脱针设计，每个机头可单独运作，实现2000转/分高速运转下车更平衡、更迅速，配有全智能油雾喷洒润滑系统，高速运作情况下，使用寿命更长。  
With adoption of advanced needle-quick-lifting structure, each head can work independently, and it can stop much more evenly and quickly under speed of 2000RPM. It has fully automatic spraying lubrication system that extends the working lift under high speed circumstance.
- 可定制1-8头各种规格机型，最大实现1200X1800的缝制幅面。  
Available with heads number from 1 to 8, with maximum 1200\*1800 sewing area.



## 选配功能与部件

### Selective Functions and Spare Parts

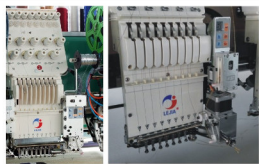
#### 金片绣 Sequins



金片绣（单金片，双金片，叠金片和四金片），实现2mm-16mm各种规格的金片绣作。

Sequin embroidery (single side sequin, double side sequin, single side overlapped sequin and double side overlapped sequin with sequins size from 2mm-16mm).

#### 简易绳绣 Easy Cording



“简易的机构、不简单的绣品”是简易绳绣最大的特点，在平绣机头上加装简易绳绣装置，就可以实现盘带绣的功能，结构简单，安装灵活，成本低。

With simple structure but remarkable embroidery is the main characteristic of easy cording device. It is just assembled on flat head and makes cording embroidery easily with much lower cost.

#### 散珠绣 Beads



通过散珠绣装置与电控有智能结合，实现对玻璃散珠的控制及绣作，代替传统的散珠人工绣作工艺，提高绣作效率，充分表现散珠绣珠光灿烂、绚丽多彩、层次清晰、立体感强的艺术特色。

By excellent combination of beads device and controller system, it works with glass beads for embroidery instead of manual embroidery with beads with improvement of work efficiency and it also makes the artistic features of beads embroidery that is more brilliant, colorful and stereoscopic.

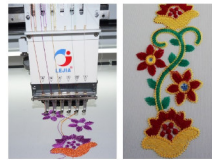
#### 简易毛巾 Lock Stitch Looping



锁式毛巾绣采用的是锁式刺绣，其绣品质量牢固、可靠，不会脱线。同时又兼顺毛巾绣的特点，具有很强的立体感，相比锁式毛巾绣机型的高昂成本，锁式毛巾机价格低，但也可丰富绣品的种类，提高绣品的美观程度。

Lock stitch looping uses lock stitches embroidery without any falling off of thread. And meanwhile, it has the characteristic of chain stitch looping embroidery with strong sense of three-D. Compared with the high cost for chain stitch looping, lock stitch looping has much lower cost, and it also offers various kinds of beautiful embroidery.

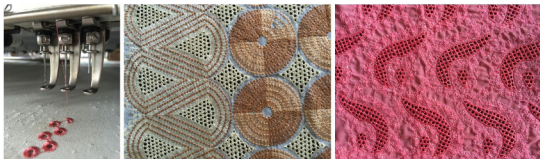
#### 粗线绣 Thick Thread



通过针杆架针杆位置及旋梭间隙的调整，可实现最大900D粗线的绣作功能，使绣品更具立体感。

By adjustment of clearance for needle bar and rotary hook, it can work with maximum 900D yarn thread, which gives better sense of 3D embroidery.

#### 雕孔绣 Boring



雕孔绣是借助绣花机上安装的雕孔刀或雕孔针等工具在刺绣面料上打出孔洞后进行包边刺绣，使绣面上既有洒脱大方的实地花，又有玲珑美观的镂空花，使绣品显得高雅、精致、别具一格。

It embroiders on holes edge after the holes are made by boring knives or needles which installed on flat head. In this way, it has both decent normal embroidery flowers but also delicate hollowed-out flowers that make embroidery more elegant, exquisite and unique.

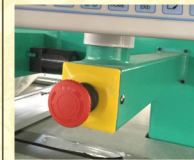
#### 热熔切割装置 Thermal Cutting Device



热熔切割装置使用简单，切割精准，适用任何合成纤维或人造革材料，可在智能系统控制下完成刺绣和切割的完美匹配，制作出绚丽多彩的绣品。

It's easy to use for any synthetic fabric or artificial leather (P.U). With precise cutting, it works synchronously with embroidery under intelligent controlling system, and makes gorgeous embroidery.

#### 急停功能 Emergency Stop



在发生紧急或意外情况的时候，通过快速按下急停按钮来紧急停机。

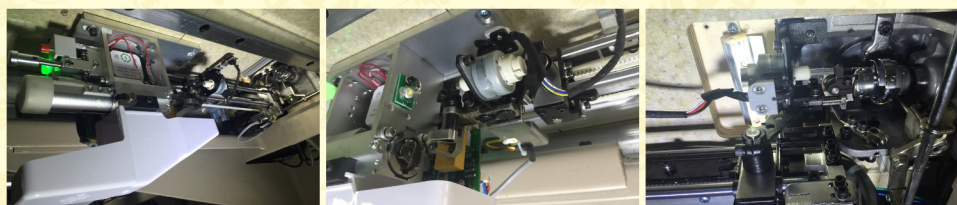
When something urgent or unexpected happens, emergency switch can stop the machine quickly.

#### 润滑系统 Lubrication system



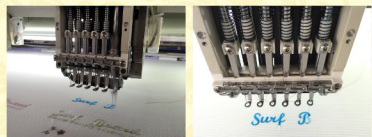
润滑系统（自动加油装置，手动加油装置，简易加油装置，油雾喷洒装置）  
Lubrication system (automatic lubrication, manual lubrication, simple oil cup and spraying lubrication)

#### 自动换底线装置 Automatic Bobbin Changing Device



更换底线是刺绣过程中的必需工序，自动换底线装置可以进行刺绣的同时可更换全台之底线；大幅度减低因更换底线的停机时间。  
Bobbin changing is one of the necessary processes of embroidery. Automatic bobbin changing can be finished during embroidering for all the heads which avoids the stop of machines due to the bobbin changing.

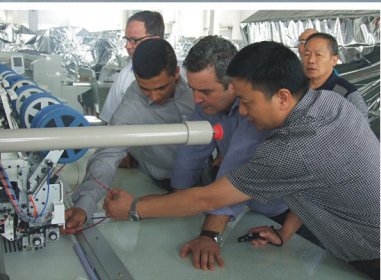
#### 高速面线夹持功能 High Speed Upper Thread Holding



通过控制面线夹持电磁铁的吸合实现压线片的压线和松线的动作，可以有效地提高绣品质量以及改善剪线的效果。

By controlling picking up of the solenoid from upper thread holding device, it makes holding and loosening of thread which greatly improves the quality of embroidery and trimming.





## Cooperation 合作交流

# 乐迎天下客，佳绣人间锦

Embroider your colorful dreams with Lejia

我们始终坚“用心服务，客户共赢”的理念，十年来，我们有幸结识来自全球各地的朋友，在坦诚交流、互惠互利的基础上开展了多渠道的合作。乐佳迈出的每一成长步伐，都倾注了我们客户的每一份支持，乐佳也愿以最优的产品、最好的服务、最合理的价格回馈新老客户，共同发展，共创辉煌。

We insist the idea of sincere service and mutual benefits. During the past decade, we were lucky to make friends from all over the world, and started cooperation in different ways based on honesty and mutual benefits. There is our customers' support in our every step forward for developing and Lejia therefore is willing to bring back with the best products, the best service and reasonable prices to our customers, to walk ahead together to a bright future!

# 乐佳绣机 行绣全球

Lejia Machine, Worldwide Embroidering



“精心制造，用心服务，争创全球行业知名品牌”，十多年来，乐佳人以诚信的态度，先进的设计，优质的产品，合理的价格和完美的服务，逐步赢得了市场的认同，乐佳绣机在国内二十多个省市占据了相当大的市场份额，同时，远销到亚洲、南美、非洲及中东地区的30多个国家和地区，乐佳品牌已成为客户对中高端电脑绣花机的首选品牌之一。

With elaborate production and sincere service, we try to build a worldwide famous brand. In the past decade, Lejia has gained the leadership one the base of honesty, sophisticated designs, excellent products, reasonable price and perfect service in more than 20 provinces of domestic market and meanwhile its products are delivered to more than 30 countries and regions such as Asia, South America, Africa and Middle East etc. Lejia brand for the time being is one of the first choices for medium and high level computerized embroidery machines.

